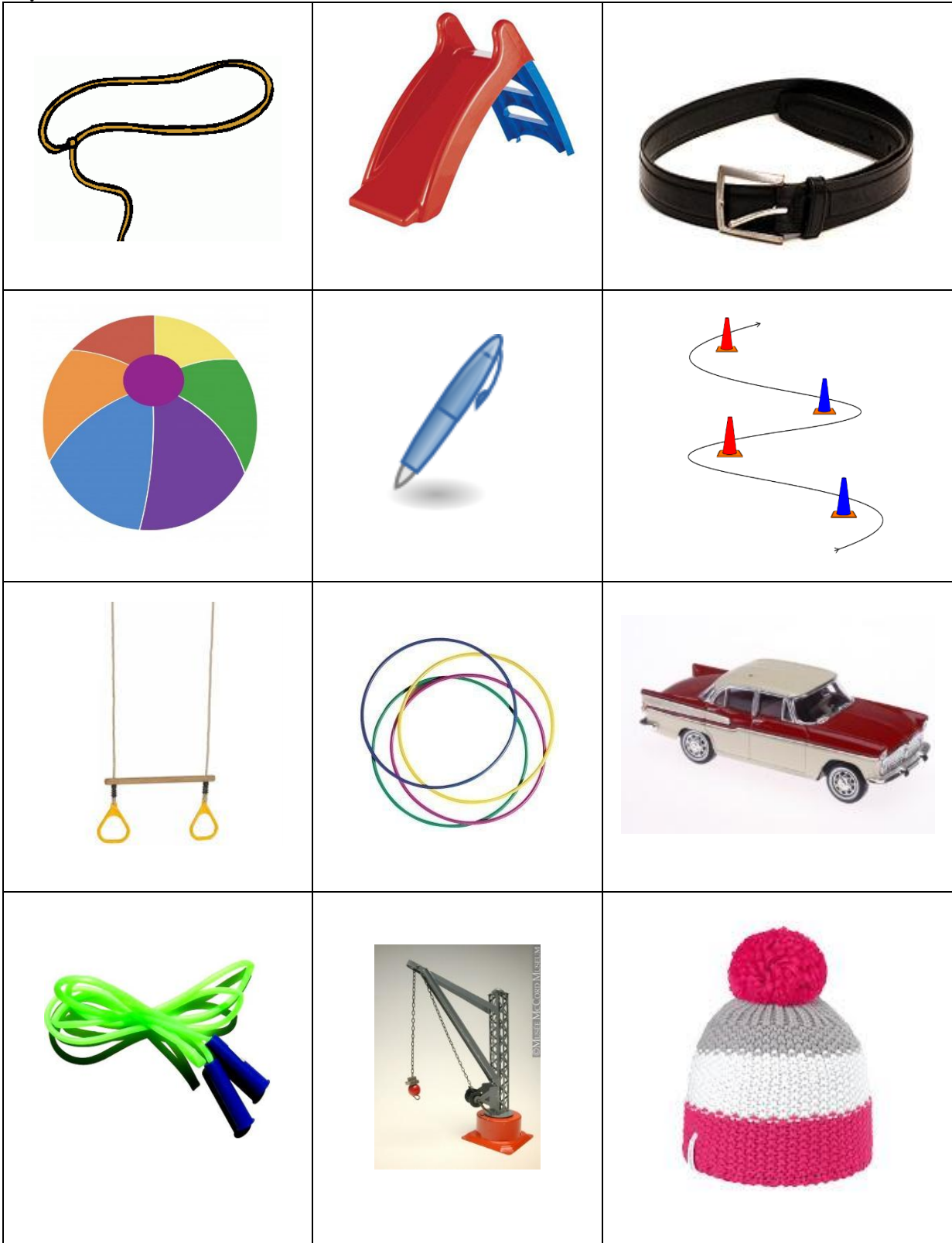


SUPERASTICOT

atelier 1 : Les transformations de Superasticot

Consigne : Superasticot se transforme pour ses amis.
Montre (ou mets des jetons sur) les images qui correspondent à ce qu'il fait.



Consigne : *Superasticot se transforme pour ses amis.*









Montre les images qui correspondent à ce qu'il fait.

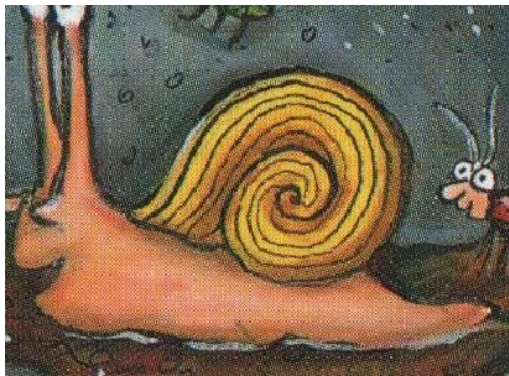


SUPERASTICOT

ATELIER 2 : les amis et les ennemis de Superasticot

Consigne et correction : Trie les images : ceux qui aident Superasticot et ceux qui lui veulent du mal.

| Les aidants | Les opposants |
|---|--|
|  |  |
|  |  |
|  |  |
|  | |
|  | |



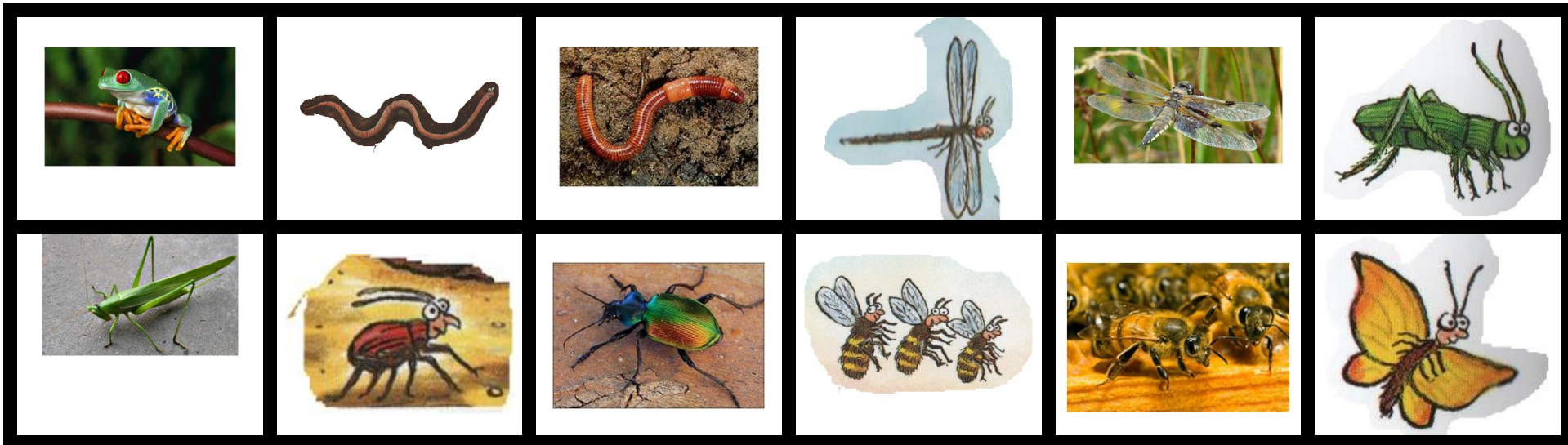
SUPERASTICOT

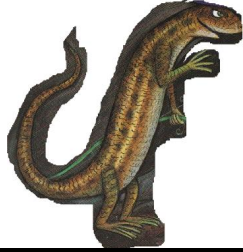
Atelier n° 3 CONSIGNE ET CORRECTION

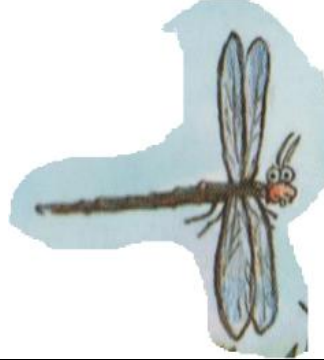
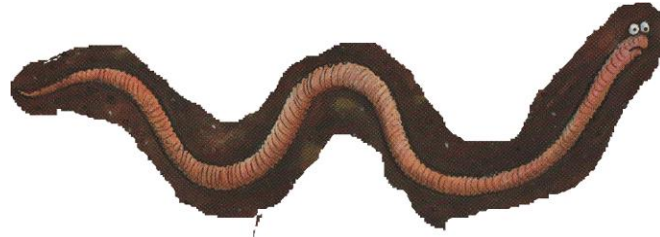
Consigne de l'atelier :

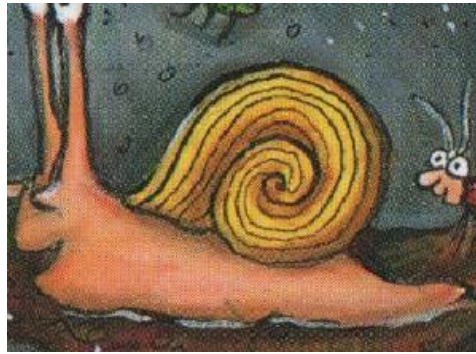
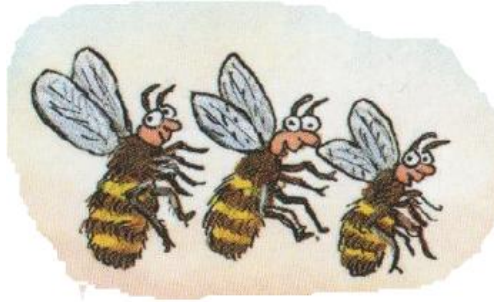
Voilà tous les animaux cités dans l'histoire.

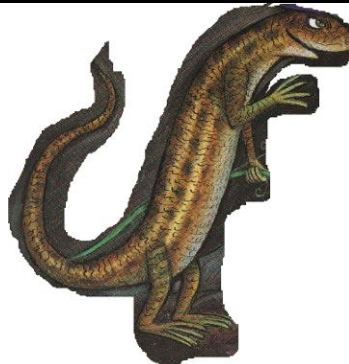
Associe l'illustration du livre à la photo de l'animal dans la réalité en les mettant côte à côte comme des dominos.

















SUPERASTICOT

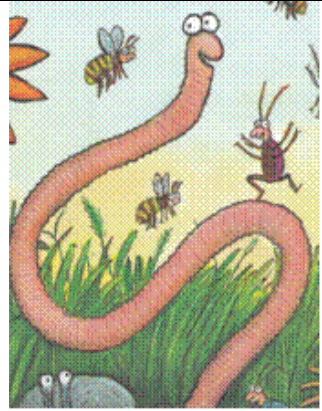
Atelier n° 4 CORRECTION

Consigne de l'atelier : Les animaux viennent en aide à Superasticot quand il est fait prisonnier.

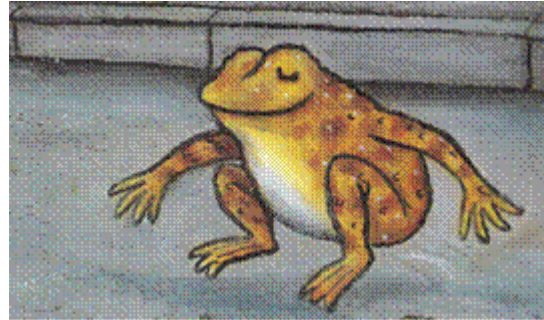
Dis si les propositions qui te sont faites sont vraies ou fausses en plaçant les cartons OUI ou NON à côté.

| Qui aide qui ? | |
|-------------------------|-----|
| Asticot aide grenouille | oui |
| Corbeau aide asticot | non |
| Asticot aide saurien | non |
| Abeilles aident asticot | oui |
| Scarabée aide asticot | non |
| Asticot aide corbeau | non |
| Asticot aide chenilles | non |
| Araignée aide asticot | oui |

ATTENTION EN DECOUPANT LES VIGNETTES DE BIEN RESPECTER LE TRAIT VERTICAL (2/3 1/3)



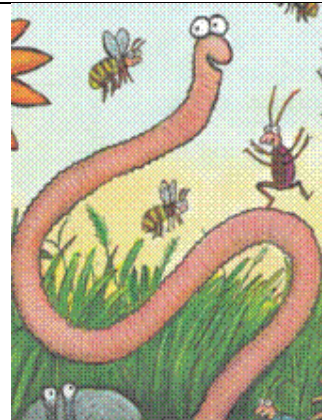
AIDE



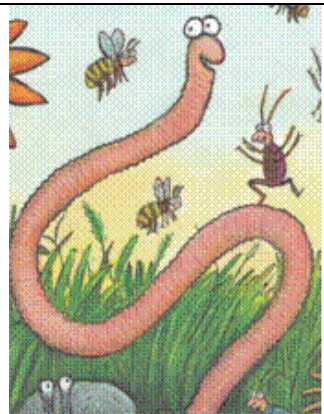
OUI



AIDE



NON



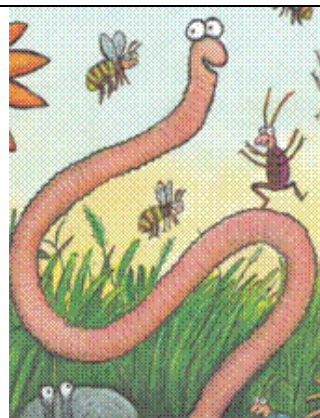
AIDE



NON



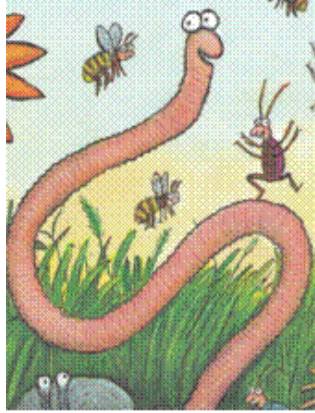
AIDE



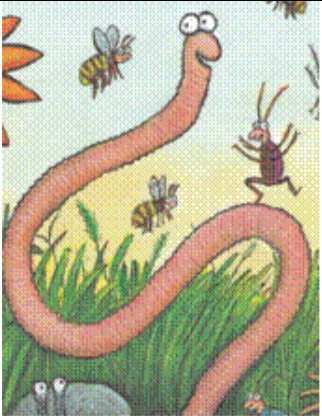
OUI



AIDE



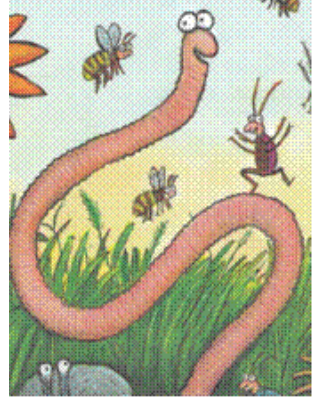
OUI



AIDE



NON



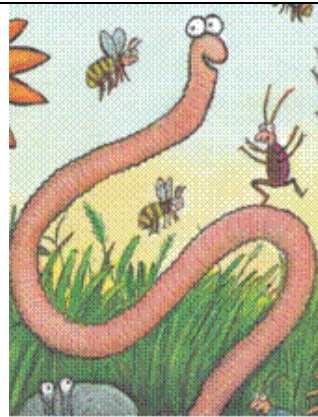
AIDE



NON



AIDE



OUI